



## FRENCH BEADED ANTHURIUM - INTERMEDIATE

**Instructor:** Fen Li

**Website:** [BeadFlora.com](http://BeadFlora.com)

### Specifications:

Flowers 2 x 3 inches (5 x 7.6 cm), Leaves 2.5 X 3.5 inches (6.3 x 8.8 cm)  
21 inches (53 cm) in height, 9 inches (22.8 cm) in width

This tutorial does not cover the techniques. For Free PDS & Videos:

- [Basic Frame](#)
- [Scallop](#)
- [Cross-over Loop](#)

To purchase a kit from >>

<https://beadflora.com/product/anthurium/>

### MATERIALS:

\* See the beads for the colorways I used in the next page.

- 15 grams 11/0 Color A (Matte Main Color)
- 15 grams 11/0 Color B (Transparent Rainbow Main)
- 15 grams 11/0 Color C (Transparent Main)
- 38 grams 11/0 Color D - 11/0 Matsuno Dynamite translucent matte emerald green 22MA 11/0 RR
- 25 grams 11/0 Color E - 11/0 Matsuno Dynamite rainbow emerald green 22R 11/0 RR
- 27 grams 11/0 Color F - 11/0 Matsuno Dynamite transparent emerald green 22 11/0 RR
- 4 grams 11/0 Color G - 11/0 Matsuno Dynamite translucent matte yellow 5MA 11/0 RR
- 4 grams 11/0 Color H - 11/0 Matsuno Dynamite opaque pastel cream 331 11/0 RR
- 35 feet 24 gauge Main Color Wire
- 55 feet 24 gauge green wire
- 6 feet 24 gauge gold wire
- 15 feet 30 gauge main color wire
- 15 feet 30 gauge green wire
- 50 feet Embroidery Floss - DMC 909 - about 2 skeins
- Floral tape
- (8) 16 inch (40.6 cm) lengths of stem wire - 18 gauge

### TOOLS:

- Wire cutters
- Chain nose pliers
- Bead spinner
- Scissors
- Ruler/Measuring tape
- Bead stopper

All instructions and photography are copyrighted to Fen Li, Bead Flora Studio 2025. No part of this tutorial is to be resold, redistributed, copied, or taught in a classroom without the author's consent. You are able to sell your finished pieces with credit to Fen Li/Bead Flora Studio as the designer.

If you need any help, feel free to email me at [fen@beadflora.com](mailto:fen@beadflora.com).

## MATERIALS

### BEADS:

#### Red Colorway:

- Color A - 11/0 Mastuno Dynamite translucent matte ruby red 8MA 11/0 RR
- Color B - 11/0 Mastruno Dynamite rainbow ruby 7R 11/0 RR
- Color C - 11/0 Matsuno Dynamite transparent red 711/0 RR

#### Pink Colorway

- Color A - 11/0 Mastuno Dynamite translucent inside dyed color matte dusty rose 208MA 11/0 RR
- Color B - 11/0 Mastruno Dynamite translucent inside dyed color dusty rose 208 11/0 RR
- Color C - 11/0 Matsuno Dynamite translucent inside dyed color rainbow hot pink 305 11/0 RR

#### Purple Colorway

- Color A - 11/0 Mastuno Dynamite translucent inside dyed color matte blue/lilac 227MA 11/0 RR
- Color B - 11/0 Mastruno Dynamite translucent inside dyed color blue/lilac 227 11/0 RR
- Color C - 11/0 Matsuno Dynamite translucent rainbow purple 11R 11/0 RR



## NOTES ABOUT THIS PATTERN

**Beads, Brands, and Wire Lengths:** The units in this pattern use cut lengths of wire. Here are factors in this tutorial that could impact wire lengths:

- **Beading tight or loose:** I bead tightly. If you tend to bead loose, you may need to add more cut wire. I usually add a few inches in my estimates to accommodate beaders that bead loosely.
- **Japanese vs Czech seed beads:** I used Japanese seed beads in this tutorial. If you use Czech beads, you may need to reduce the length of wire needed.

The combination of how tight you bead with the type of bead used could affect the length of cut wire you need. If you are using Japanese seed beads and tend to bead tightly, you will be fine following my length recommendations.

If you use Japanese seed beads and bead loosely, you may need to add 5 to 10 inches (12.7 to 25 cm) more to accommodate.

If you are using Czech beads and bead tightly, you most likely will need less wire. Make the first unit following my recommendations and then make note of what you need for subsequent units.

If you are using Czech beads and bead loosely, you will most likely be fine following my wire recommendations and then adjust for subsequent units.

**Stem wires:** The pattern calls for 18 gauge stem wires for a slimmer stem and when combined with the other stems, the resulting stem is very sturdy. If you're only making one Anthurium for a vase, then I suggest you use 16 gauge stem wire.

**Lace-as-you-go:** There is a lot of lacing in this pattern. It's important to lace-as-you-go vs lacing after the unit has been made. Due to the size and shape, lacing tames the desired shape. It can get out of control real quick otherwise.

**Free form Shading:** We'll be free form shading in this pattern. I will include some bead counts for those that need that initial structure. But after you get the hang of it, let loose and go with the flow of the beads.

**Note on Scallops:** When you see odd number scallops, you'll be working on the left of the unit. When you see even number scallops, you'll be working on the right.

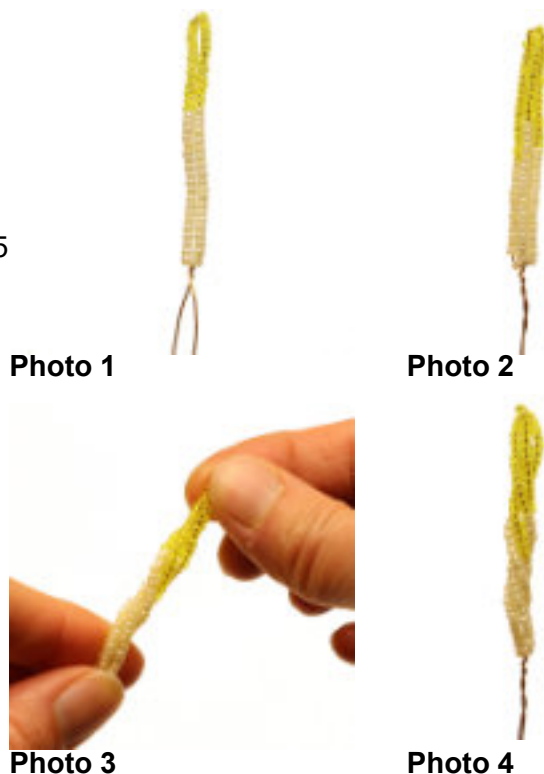
**SPADIX-** 11/0 Color G (Matte Yellow) & H (Ceylon Yellow), 24 gauge gold wire

**Technique:** - Cross-over loop

**Pattern:** - Loop: 1¼ (3.1 cm) inch Color G, 1 ½ (3.8 cm) Color H, 1¼ (3.1 cm) Color G Loop,  
Cross-over loop: ⅞ (2.2 cm) H, Rest G, 1 inch (2.5 cm) G, rest H

1. Cut 13 inches (33 cm) of 24 gauge gold wire.
2. **Loop:** String on the following pattern (1¼ inch (3.1 cm) Color H, 1 ½ (3.8 cm) Color G, 1¼ (3.8 cm) Color H) and make loop. Pinch the loop. *Photo 1.*
3. **Cross-over loop:** String on ⅞ inch (2.2 cm) Color H, about 1 inch Color G. Start the cross-over loop. String on about 1 inch (2.5 cm) Color G and remainder Color H to finish the wrap. *Photo 2.*
4. Hold onto the spadix firmly and twist. *Photo 3.* See the finished spadix in *Photo 4.*

**- Make 1 Spadix per Flower. Make 3 for whole arrangement.**



**SPATHE-** 11/0 Color A (Matte Red), Color B (Transparent Rainbow Red), Color C (Transparent Red)/24 gauge main color wire, 30 gauge main color wire

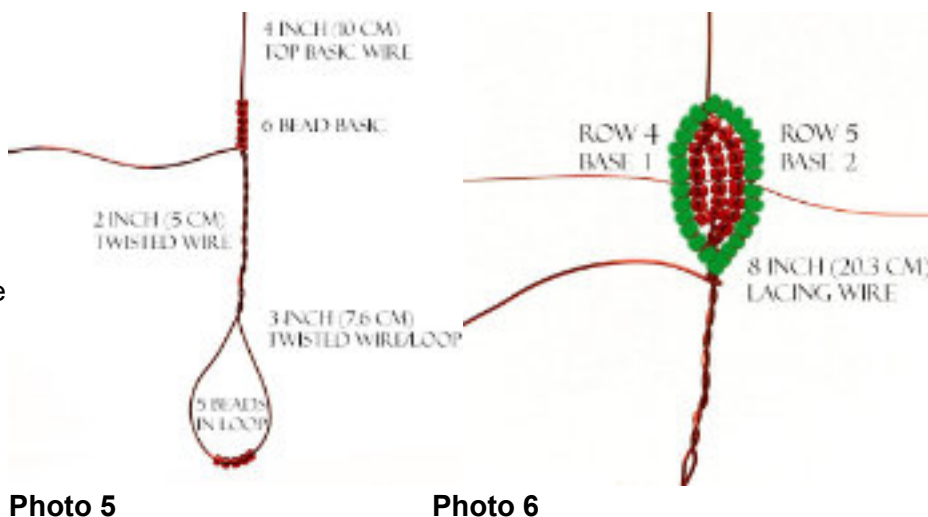
**Technique:** - Basic Frame/Scallop

**Pattern:** - 6 Bead Basic, RT PB, 30 scalloped rows - see below for complete directions

**NOTE:** Due to the bead counts being used in the scallops, the spathe will look larger on the right as you're making it. Do not be alarmed. This is normal for this pattern. It will even out as we'll be finishing the unit at the top instead on the bottom wires as we usually do.

Starting with Row 18, we'll be free-form shading between Color B & C. You'll see examples of how I shaded if you need initial guidance but do go with the flow afterwards.

1. Cut a 90 inch (228.6 cm) length 24 gauge main color wire.
2. Make a 6 bead basic frame with a 4 inch (10 cm) top basic wire and 5 Color A beads in the basic loop. Make the twisted wire/loop to be 3 inches (7.6 cm) with a 2 inch twisted wire. *Photo 5.*
3. String about 11 inches (27.9 cm) of Color A beads onto the working wire. Make the first 5 rows with **rounded tops** and **pointed bottoms**. Start an 8 inch (20.3 cm) lacing wire along the middle of the unit. Take note that Row 4 will be referred to as Base 1 and Row 5 as Base 2. *Photo 6.*



4. Start a 7 inch (17.7 cm) lacing wire along the top of the basic row. Lace both wires up in a **V** shape. *Photo 7.*

5. **Scallop 1 - Row 6:** 4 bead scallop on Base 1. **Row 7:** String on enough beads to finish row. *Photo 8.*

6. When making rows on the right, re-position the working wire by inserting it up between the left two rows. *Photo 9.* Now, thread it up and position the wire on the right. *Photo 10.* Note: Re-position the wire for all rows on the right from now on.

7. **Scallop 2 - Row 8:** 4 bead scallop on Base 2. *Photo 11.* **Row 9:** String on enough beads to finish row.

8. **Scallop 3 - Rows 10/11:** 2 bead scallop on Base 1. *Photo 12.*

9. **Scallop 4 - Rows 12/13:** 2 bead scallop on Base 2. Start a 6 inch (15.2 cm) lacing wire along the bottom. *Photo 13.*

10. **Scallop 5 - Row 14:** 0 bead scallop on Base 1. *Photo 14.* Thread the working-wire over the 1<sup>st</sup> bead on Base 1. **Tip:** Hold the working-wire with your thumb nail help keep the wire in place. **Row 15:** String enough beads to finish the row.

11. **Scallop 6 - Rows 16/17:** 0 bead scallop on Base 2. Start a 7 inch (17.78 cm) lacing wire along the bottom. *Photo 15.*

12. Flatten the loop for the wire. *Photo 16.* **NOTE:** We'll be making the wraps on **untwisted** wire. Twisting the bottom wire will block us from using the beads in the loop.



Photo 7

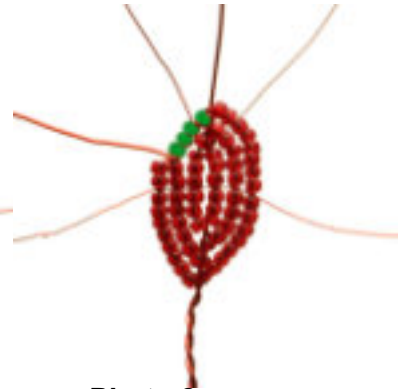


Photo 8

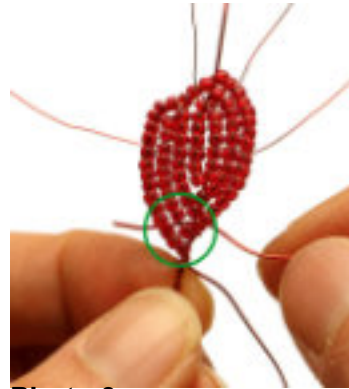


Photo 9

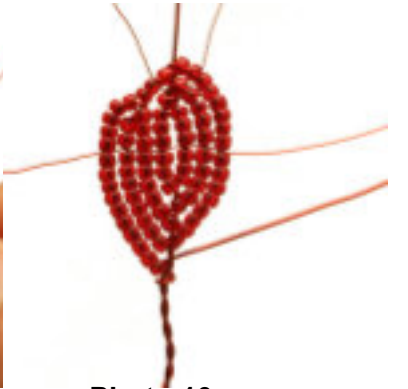


Photo 10



Photo 11



Photo 12

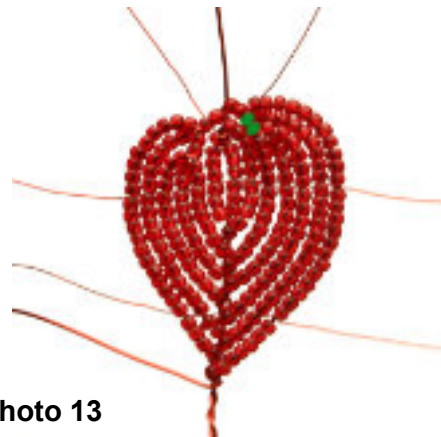


Photo 13

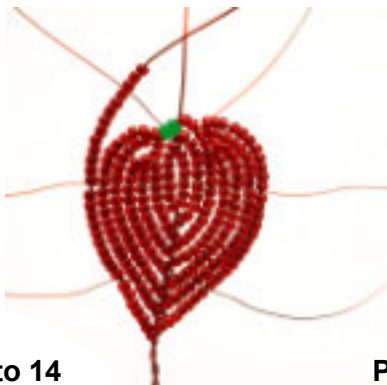


Photo 14

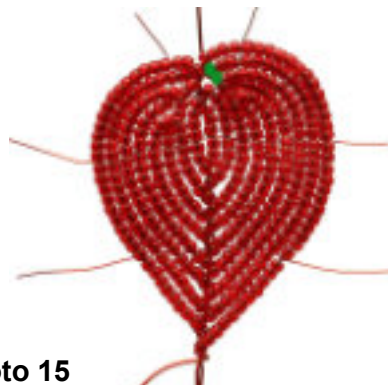


Photo 15

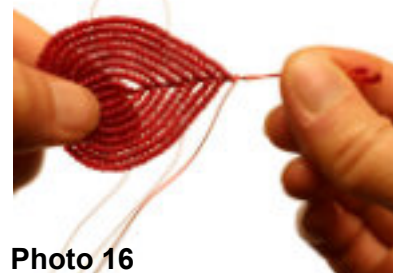


Photo 16



13. The remainder of the Scallops will now be made on the previous row and **not** on a Base row. **Scallop 7 - Row 18/19:** 2 bead count scallop. **Free-form shade using Color B & C.** Each of my spathes are shaded differently. See *Photo 17 & 18* for example of how I shaded these two rows.

14. **Scallop 8 - Rows 20/21:** 2-bead count scallop. *Photo 19.*

15. **Scallop 9 - Rows 22/23:** 3-bead count scallop. Refer to left of *Photo 20.*

16. **Scallop 10 - Rows 24/25:** 3-bead count scallop. Refer to right of *Photo 20.*

17. **Scallop 11 - Rows 26/27:** 3-bead count scallop. Refer to left of *Photo 21.*

18. **Scallop 12 - Rows 28/29:** 3-bead count scallop. String on the beads for Row 29 but do not finish the row. Refer to right of *Photo 21.* **Tip:** Put a bead-stopper on the wire or make a knot to keep the beads from falling off.

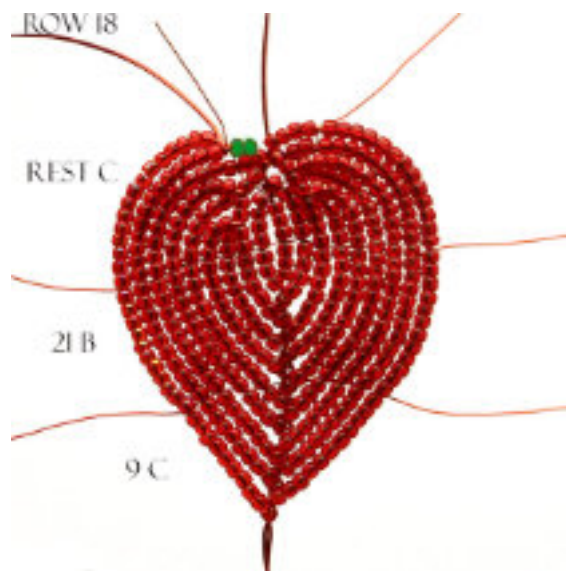


Photo 17

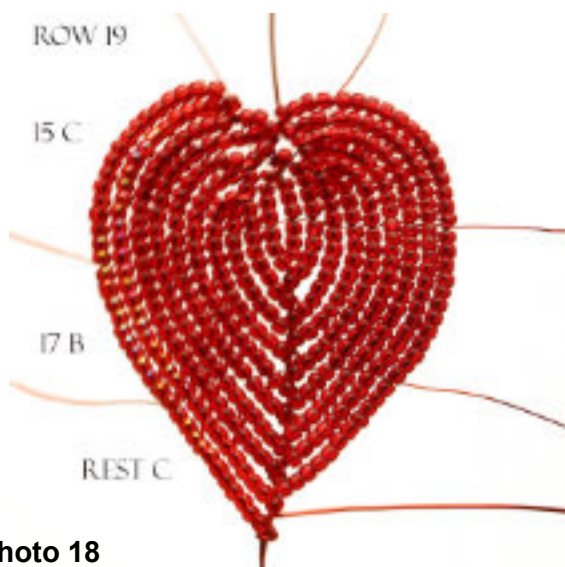


Photo 18



Photo 19



Photo 20



Photo 21

19. Open the loop and push the 5 beads to the front. Cut the back of the loop leaving about 1/8 inch (.31 cm) wire nub. *Photo 22.*

20. Knot the top of the wire with the beads. Push the wire nub down on the along the unit. *Photo 23.*

21. Now finish Row 29 over the the 5 beads. *Photo 24.*

22. **Scallop 13 - Row 30:** 3 bead-count scallop. *Photo 25.*

23. **Finishing:** Thread the working-wire around each top scallop notch until it reaches the top basic wire. *Photo 26.* Make sure it's along the crevice so that the wire does not show up in the front of the unit.

24. Twist the two wires together. *Photo 27.*

25. **Reinforcing:** Cut a 10-inch (25.4 cm) length of 24 gauge main color wire.

26. With the front of the unit facing up, fold the wire in half and have it straddle the middle near the top lacing wire. *Photo 28.*

27. Pull the two sides to the back and twist the wires together few times. *Photo 29.*

28. Lay the wires down along the unit and twist the bottom wires together. This reinforces the body of the unit so it'll stay up when assembled. See the finished Spadix in *Photo 30.*

**- Make 1 Spathe per Flower. Make 3 for whole arrangement.**



Photo 22



Photo 23



Photo 24



Photo 25



Photo 26



Photo 27

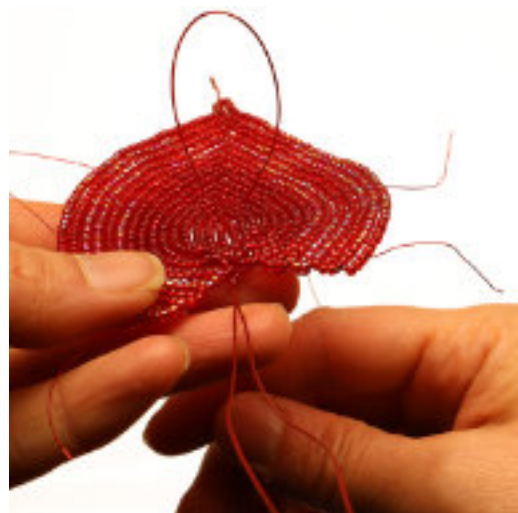


Photo 28



Photo 29



Photo 30



## FLOWER ASSEMBLY - see Note about stem wires on page 2.

1. Prepare a length of 18 gauge stem wire with wrapping it with floral tape.
2. Attach the **Spadix** onto the stem with 30 gauge wire. *Photo 31.*
3. Now attach the **Spathe** onto the stem. *Photo 32.*
4. Secure with floral tape.
5. **Shaping:** Bend the Spadix slightly inwards toward the Spathe. *Photo 33.*
6. Fold the tip of the and shape the "ears" of in. *Photo 34.* See the assembled Anthurium in *Photo 35.*



Photo 31



Photo 32



Photo 33



Photo 34



Photo 35

**LEAF** - 11/0 Color D (Matte Green), 11/0 Color E (Transparent Rainbow Green), Color F (Transparent Green)/24 gauge green wire

**Technique:** - Basic Frame/Scallop

**Pattern:** - 13 Bead Basic, RT PB, 30 scalloped rows - see below for complete directions

1. Cut a 100 inch (254 cm) length 24 gauge main color wire.
2. Make a 13 bead basic frame with a 4 inch (35.5 cm) top basic wire and 1 Color D beads in the basic loop. Make the twisted wire/loop to be 4 inches (10 cm) with a 2 inch twisted wire.
3. String about 11 inches (27.9 cm) of Color D beads onto the working wire. Make the first 5 rows with **rounded tops** and **pointed bottoms**. Start an 8 inch (20.3.2 cm) lacing wire along the middle of the unit. Start a 7 inch (17.7 cm) lacing wire along the top of the basic row. Lace both wires up in a **V** shape. *Photo 36.*

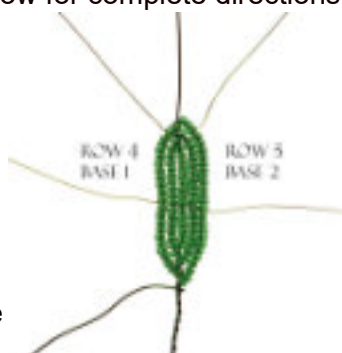


Photo 36

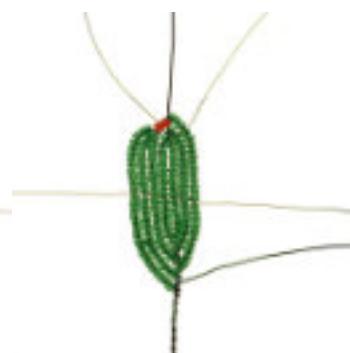


Photo 37

4. **Scallop 1 - Rows 6/7:** 2-bead count scallop on Base 1. *Photo 34. Photo 37.*

5. **Scallop 2 - Rows 8/9:** 2-bead count scallop on Base 2. Start a 6 inch (15.2 cm) lacing wire along the bottom. *Photo 38.*

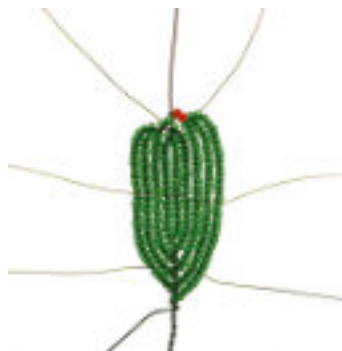


Photo 38

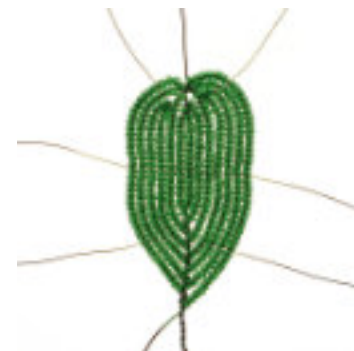


Photo 39

6. **Scallop 3 - Rows 10/11:** 0-bead count scallop on Base 1.

7. **Scallop 4 - Rows 12/13:** 0-bead count scallop on Base 2. *Photo 39.*

8. **Scallop 5 - Rows 14/15:** 2-bead count scallop. Free-form shade using Color E & F. See *Photo 40* for an example of how I am shading this leaf.
9. **Scallop 6 - Rows 16/17:** 3-bead count scallop. Refer to right of *Photo 40*.
10. **Scallop 7 - Rows 18/19:** 3-bead count scallop. Refer to the left of *Photo 41*.
11. **Scallop 8 - Rows 20/21:** 3-bead count scallop. Refer to the right of *Photo 41*.
12. **Scallop 9 - Rows 22/23:** 3-bead count scallop. Refer to the left of *Photo 42*.
13. **Scallop 10 - Rows 24/25:** 3- bead scallop. Refer to the right of *Photo 42*. Start a 5 inch (12.7 cm) lacing wire along the bottom.
14. **Scallop 11 - Rows 26/27:** 3-bead count scallop. Refer to the left of *Photo 43*.
15. **Scallop 12: Rows 28/29:** 3-bead count scallop. String on the beads for Row 29 but do not finish the row. Refer to right of *Photo 43*. Use a bead stopper or make a knot to keep the beads from falling off.

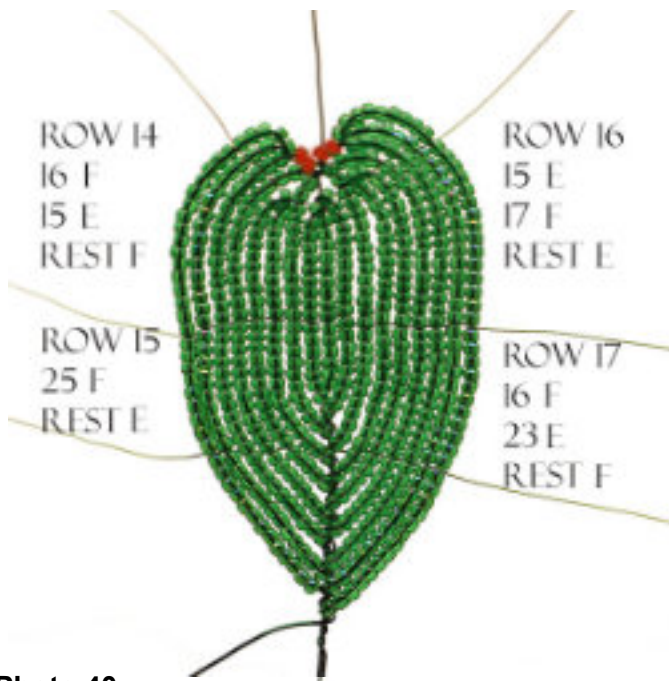


Photo 40

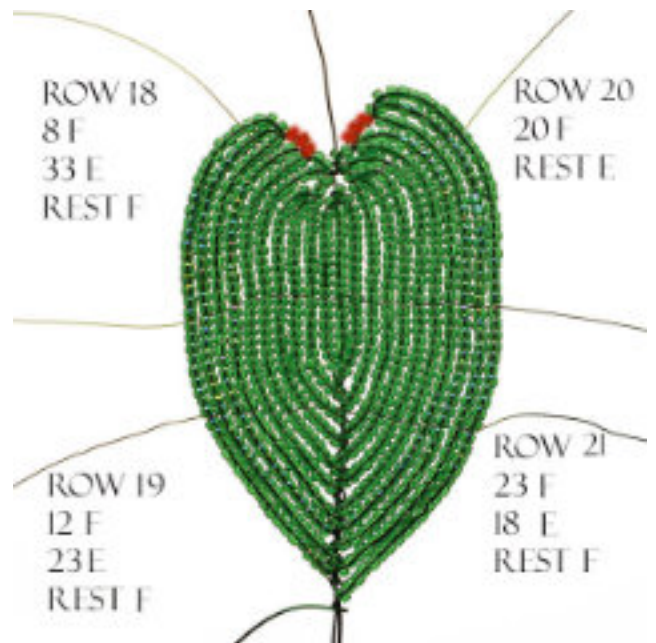


Photo 41

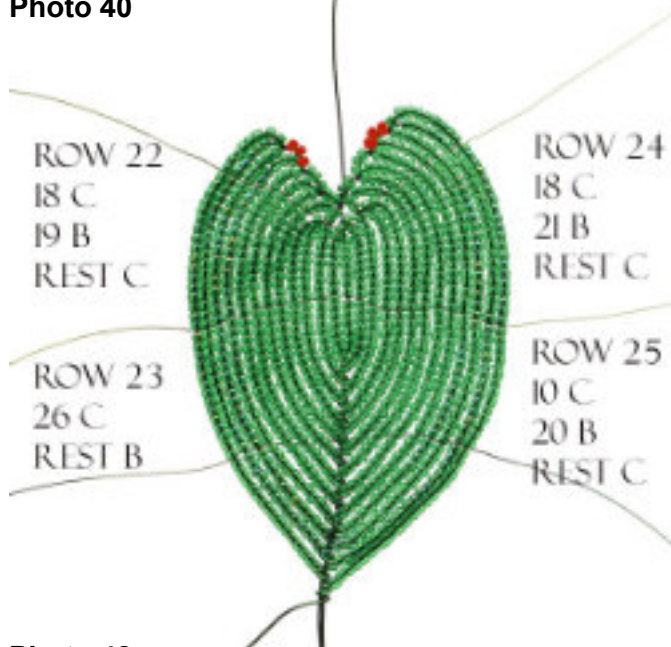


Photo 42

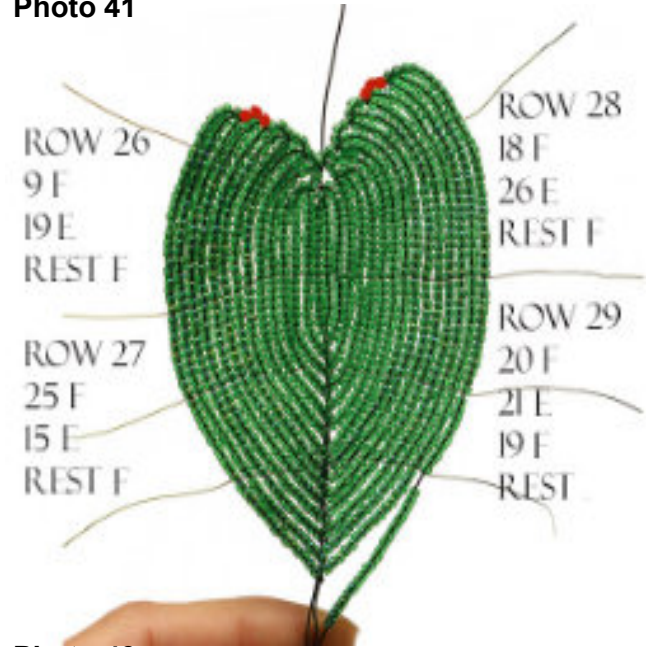


Photo 43



15. Open the loop and push the 1 bead to the front. Cut the back of the loop leaving about 1/8 inch (.31 cm) wire nub. *Photo 44.*



Photo 44

16. Knot the top of the wire with the beads. Push the wire nub down on the along the unit.

17. Now finish Row 29 over the the 1 bead. *Photo 45.*



Photo 45

18. **Scallop 13 - Row 30:** 3-bead count scallop.

19. Follow the finishing and reinforcing steps from the Spadix instructions. Spadix steps 23 to 28.

## - Make 5 Leaves

## LEAF ASSEMBLY

1. Prepare a length of 18 gauge stem wire by wrapping it with floral tape.

2. Attach the the leaf on with 30 gauge wire.

3. Secure with floral tape. See assembled leaf in *Photo 46.*

4. If flossing, floss 4 inches (10.1 cm) down the stem) on 3 stems. Floss about 7 inches (17.7 cm) on 2 of the stems. See *Photo 46.*

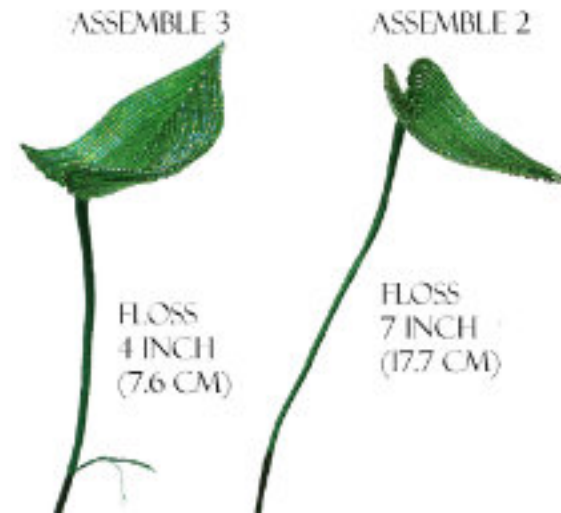


Photo 46

## ASSEMBLY

1. Use the Flossing specifications in *Photo 47*, floss the flower stems and the assembled leaves together.

2. Arrange the 3 flower stems and 2 leaf stems and wrap them together with floral tape at where the embroidery floss ends.

3. Hook new embroidery floss in between a stem. *Photo 48.*

## FLOSSING SPECIFICATIONS



Photo 47



Photo 48

4. Floss down the stem about 3 to 4 inches (7.6 to 10.1 cm).

*Photo 49.* Cut and knot the embroidery floss

5. Trim the stem wires so that they are flush at the end. Wrap with floral tape.

6. Shape the spathes and leaves. Shape and bend the stem wires.

- Now your Anthurium stem is ready to be added to a vase! Use pebbles in the vase if extra weight is needed to keep the stem up.



**Photo 49**



**Photo 50**