

Technique: Continuous Cross-over Loops (CCL)

Pattern: Ten 20-bead CCL(RB), 6 rows

1. Leave a 5-inch (12.7 cm) tail. Make a 20-bead loop. Pinch the loop. (*Photo 1*)

2. Move the working-wire so that it is upwards in between the loop. (*Photo 2*)

3. Feed enough beads so that it covers the wire and then bend the bare wire over the top of the loop and go down the backside. (*Photo 3*)

4. Feed more beads on until it covers the wire. There will be a small amount of wire peeking through at the top and that's okay. (*Photo 4*) **TIP:** Using the same color wire as your beads will make the wire less noticeable.

5. Wrap the bare wire around the base twice to secure.

6. Follow Steps 2 to 5 until you have 10 petals and cut the wire so that there is another 5-inch (12.7 cm) tail. Twist the two wires together slightly at the base.

7. **Repositioning Tail Wires.** Take one of the tail wires and wrap it around the base of a petal across it. (*Photo 5*) It should look like *Photo 6*.

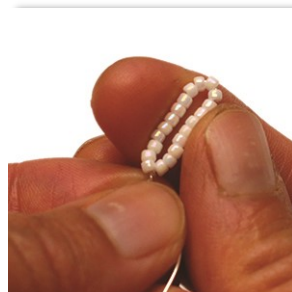


Photo 1

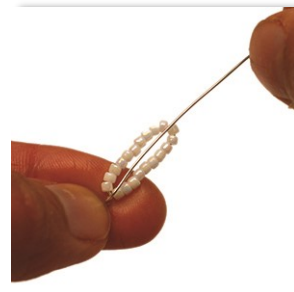


Photo 2



Photo 3

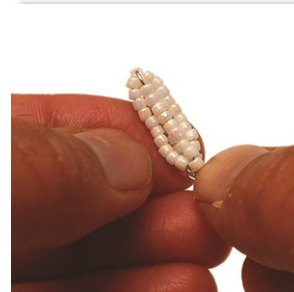


Photo 4



Photo 5



Photo 6