

Technique: Continuous Split Basic (CSB)

Pattern: Five 3-bead CSB w/ 3 petals on basic, 2 petals on split basic, RT PB, 5 rows

1. Make a 3-BB with 6 beads in the basic loop and 6-inch (15.2 cm) top basic wire. (Photo 1) Follow the above pattern to make the first petal.

2. Bend the top basic-wire down the back of the petal (Photo 2)

3. Bring the top basic-wire **over** the base of the petal and wrap it **under to the right**. (Photo 3)

4. Twist the working-wire and the top-basic wire together up 1/4 inch (6 mm) to form a new twisted-wire. (Photo 4) String 3 beads on the top basic wire and re-knot the top.

TIP: Due to differences in each person's wrapping styles, the lengths of the twisted-wire may vary. It is important to have just the right length of twisted wire for the subsequent petals. The best way to gauge the amount of wire you need is to measure the twisted-wire from the first petal.

5. Follow Steps 2 to 3 until there are three petals. Fold the basic wire down the third petal and wrap around the base. The basic wire is now one of the tail wires.

6. Undo any twists in the basic loop. Divide the beads so there are 3 beads on each side of the loop. Cut the loop and knot the ends. (Photo 5)

7. **Maneuvering wires.** Take the working-wire and wrap it around between the first two petals. (Photo 6)

8. Wrap the working-wire around between the second and third petal. (Photo 7) The working-wire is now next to the outer cut-loop wire.

9. Twist the working-wire and cut-loop wire up 1/4 inch (6 mm) to form a new twisted-wire and make a petal. (Photo 8)

10. Twist the working-wire and the last cut-loop wire to form a new twisted-wire and make the last petal. Cut a 3-inch tail (7.6 cm) off the spool. Finish the last two petals as usual.

11. **Optional Step:** It may not matter with a smaller blossom like this but you may want to do this step with larger petals. If you don't like the wire along the back, cut the wire leaving a small wire bit on the top. (Photo 9)

12. Wrap the longer wire tightly around the space between the two petals twice. (Photo 10) Cut off the excess wire and then tuck in with pliers. You may also wrap the longer length of wire around the base of the petal if you prefer.



Photo 1



Photo 2

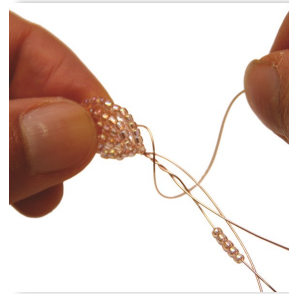


Photo 3



Photo 4

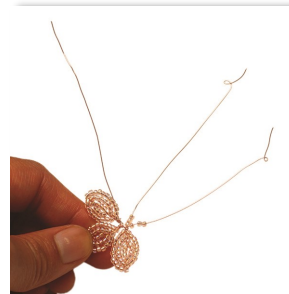


Photo 5



Photo 6

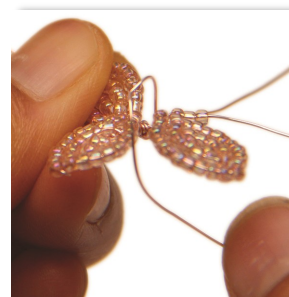


Photo 7



Photo 8

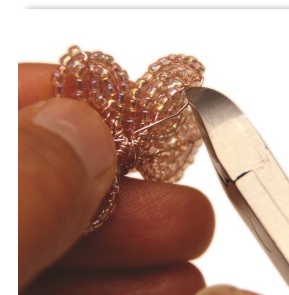


Photo 9

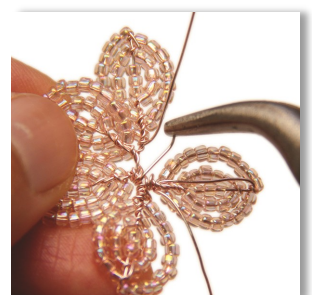


Photo 10