

Technique: Basic Frame

Pattern: 3-bead basic (BB), rounded top rounded bottom (RT, RB), 7 rows

1. Move 3 beads to the end of the wire. At the 1-inch mark (2.5 cm), make a cross with the working-wire to form a loop. Adjust the loop so that it is about 5 inches (12.7 cm) in length. (Photo 1)

Note: The lengths of the top and bottom wires may vary depending on the size of the petal/leaf. Most of the time, it doesn't matter as long as you have enough room to wrap.

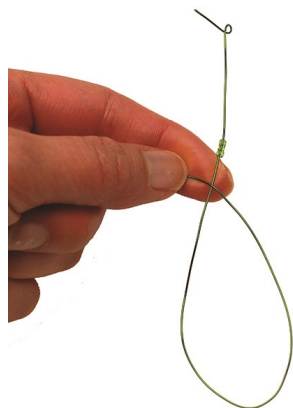


Photo 1

2. Twist the wires together down about 1 inch (2.5 cm). This is called the **basic frame**. We started with 3 beads so this is called a **3-bead basic (BB)**. Refer to (Photo 2) for the names of the various parts of the basic frame.

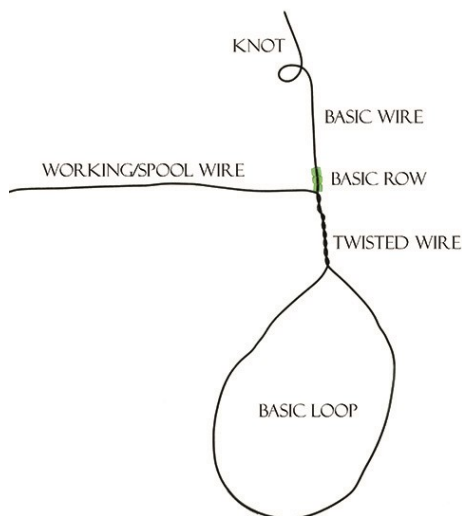


Photo 2

3. Position the working-wire to the left. Feed beads onto the working-wire. Removing any excess beads, place the bare working-wire over the basic row. (Photo 3)

4. Wrap the working-wire behind the basic wire and then back to the front. (Photo 4)

5. Feed beads on the working-wire. Reposition so that the basic loop is facing up.

6. Wrap the bare wire behind the twisted wire and then back to the front. (Photo 5)

7. Follow Steps 3 to 6 until you have 7 rows.

8. **Reducing to two bottom wires.** Wrap the working-wire around the base of the leaf twice to secure and cut the wire. (Photo 6) Tuck in the wire bit with pliers.

9. Cut the end of the loop so that both wires are flush. (Photo 7) You now have two bottom wires.

10. Cut the top basic wire leaving approx. 1/8 inch (3 mm) of wire left. Fold the wire bit to the back of the petal. (Photo 8)

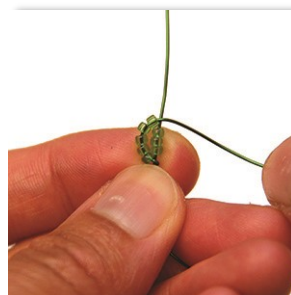


Photo 3

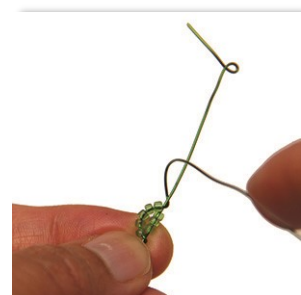


Photo 4

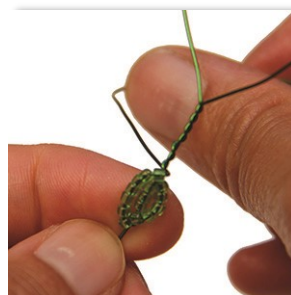


Photo 5



Photo 6



Photo 7



Photo 8